



**V-TECH**  
**ICT ACADEMY**

**45 Chime Avenue New Haven, Enugu**

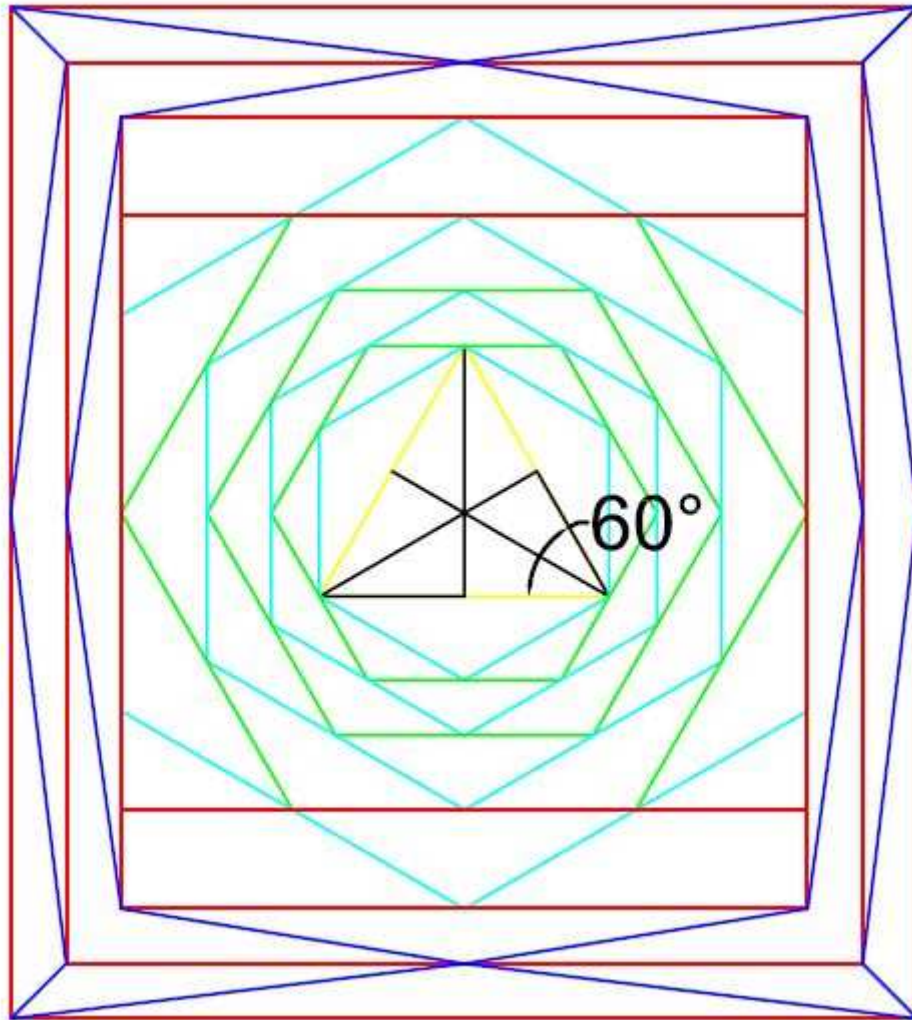
**[www.vtechservicesng.com](http://www.vtechservicesng.com)**

**08137979944**

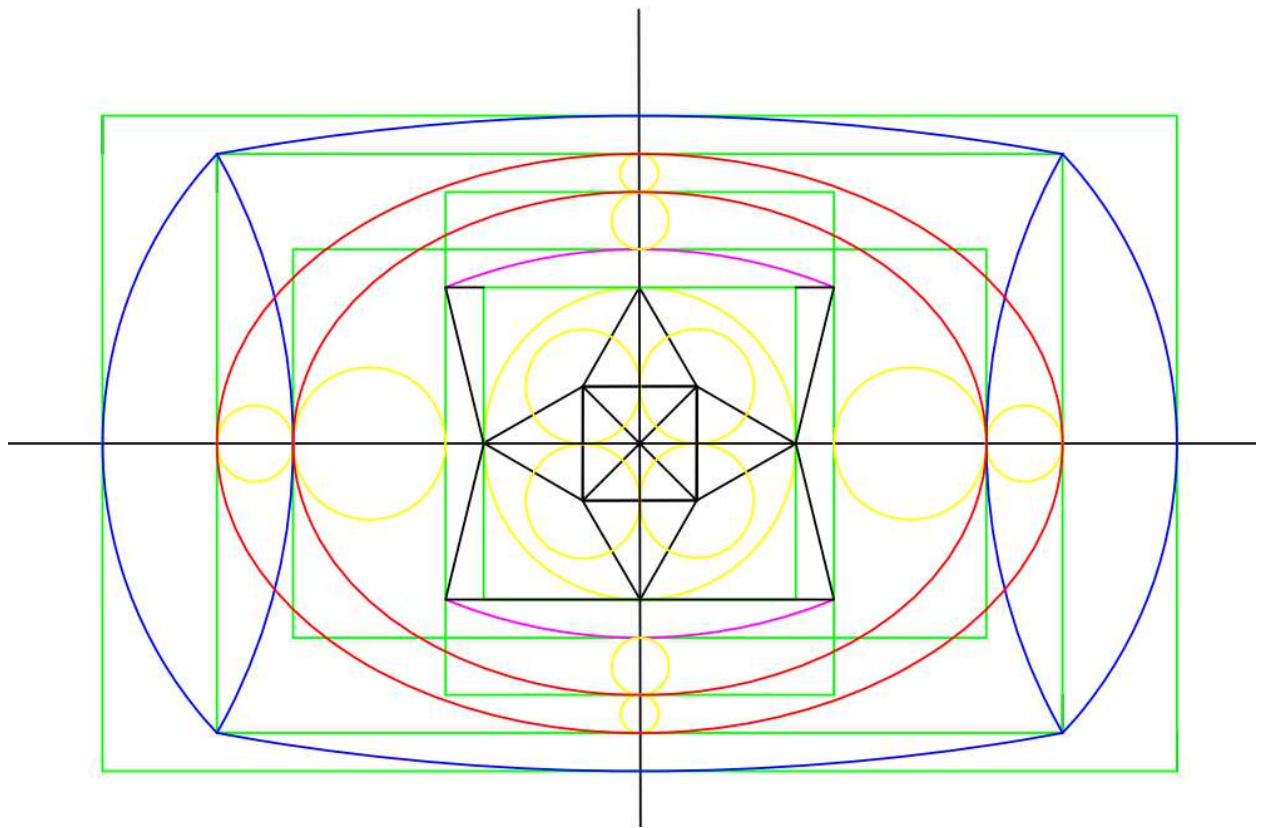
**08037785265**

# AUTOCAD ASSIGNMENT 2D

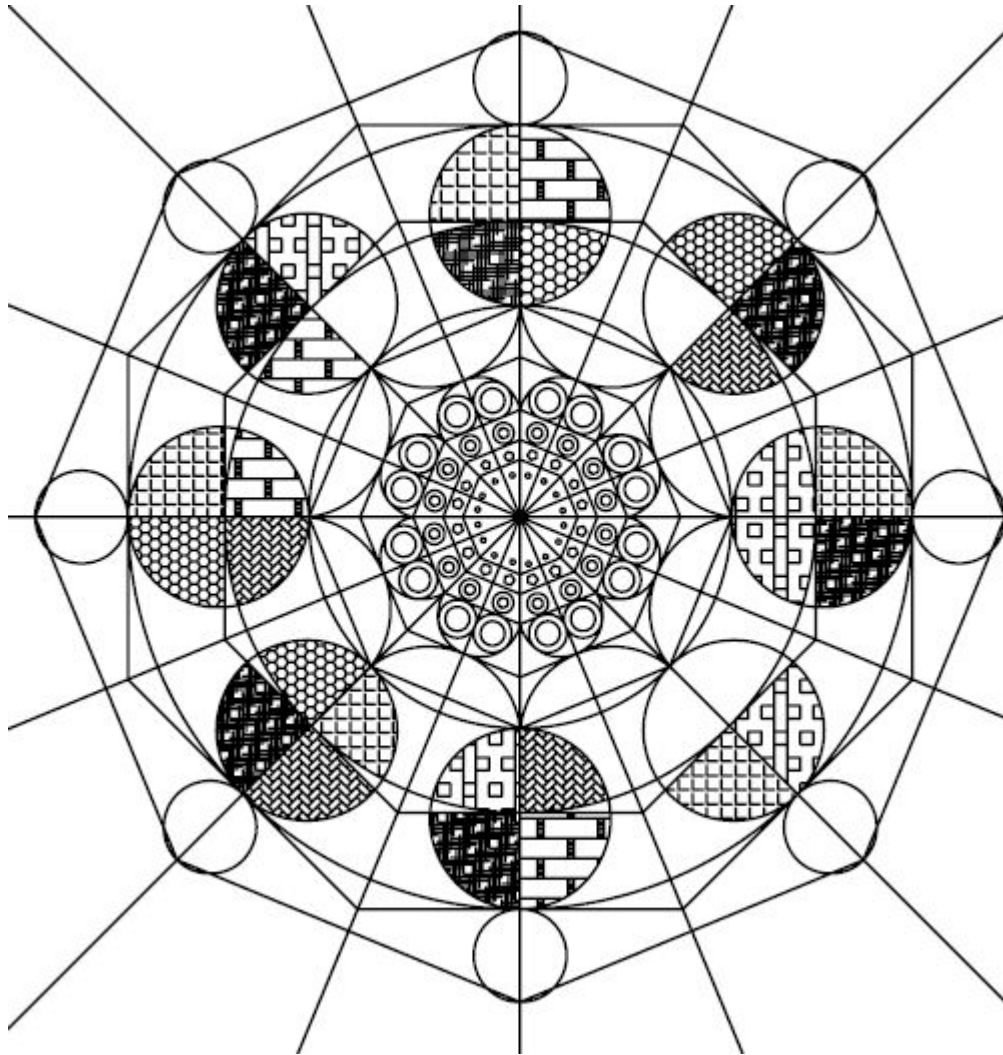
## Assignment 1



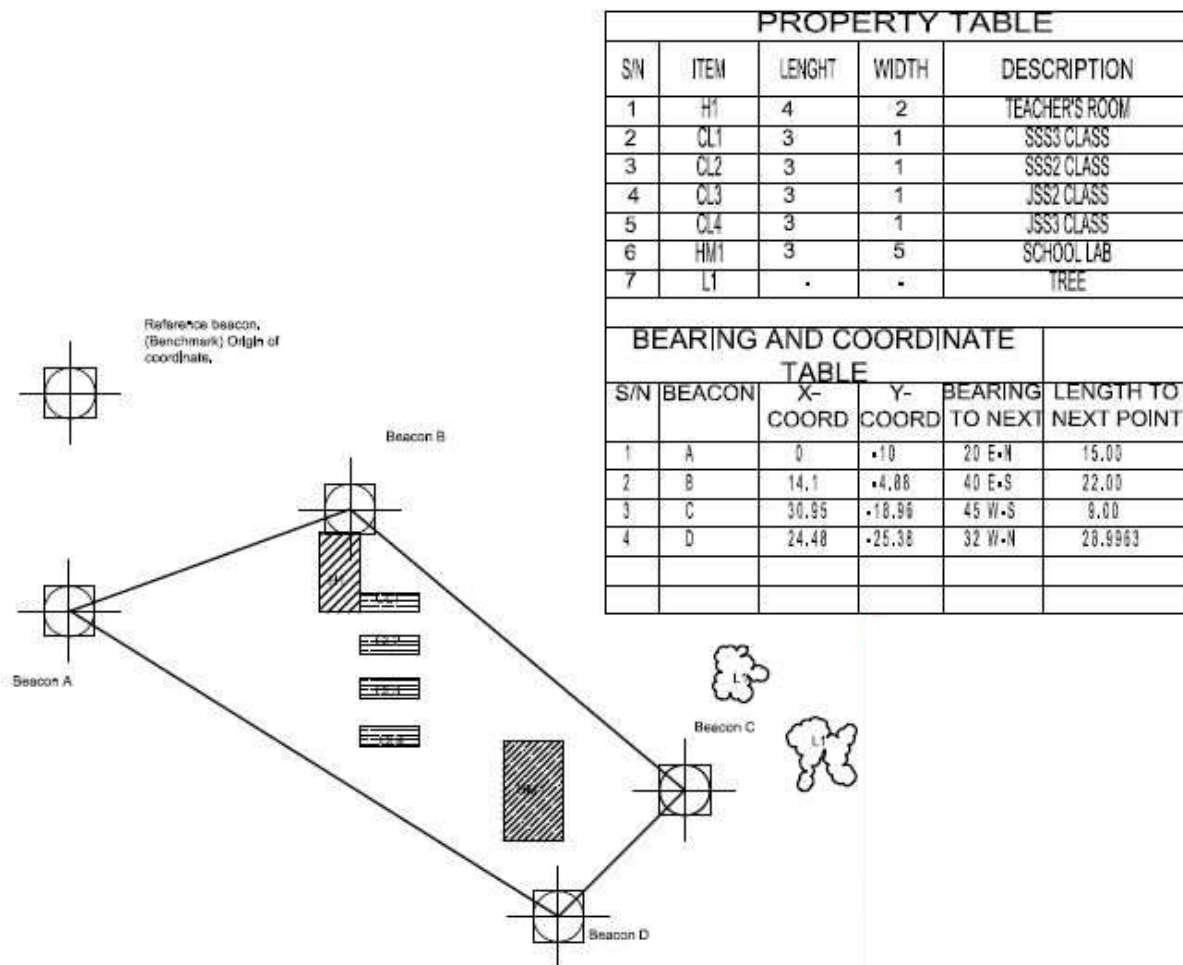
## Assignment 2



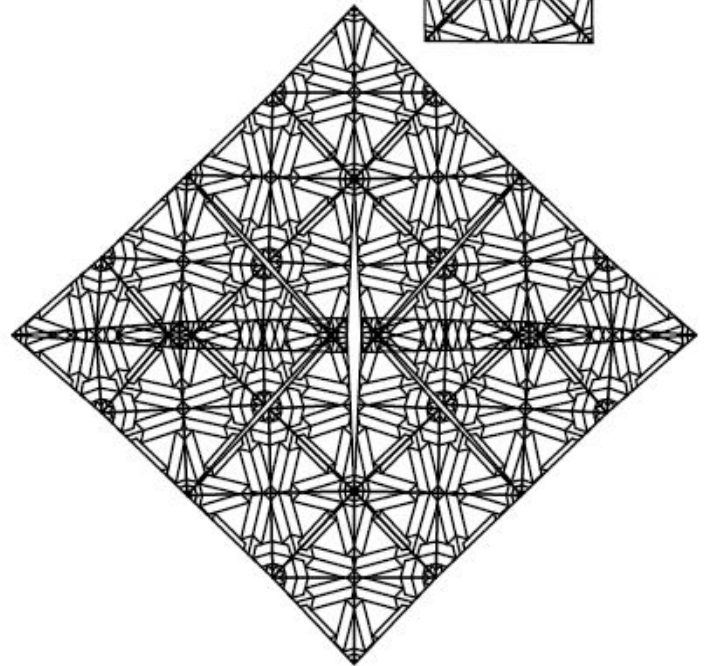
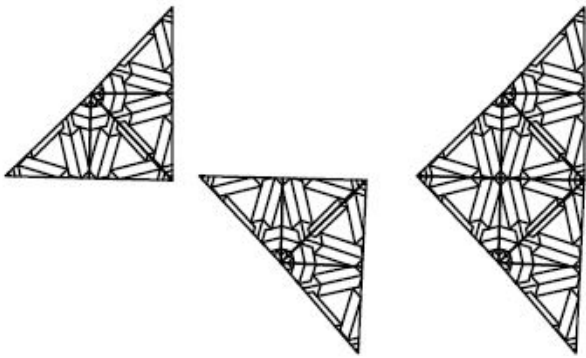
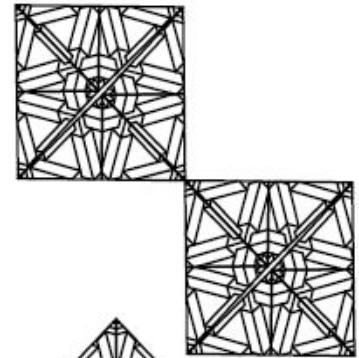
# Assignment3



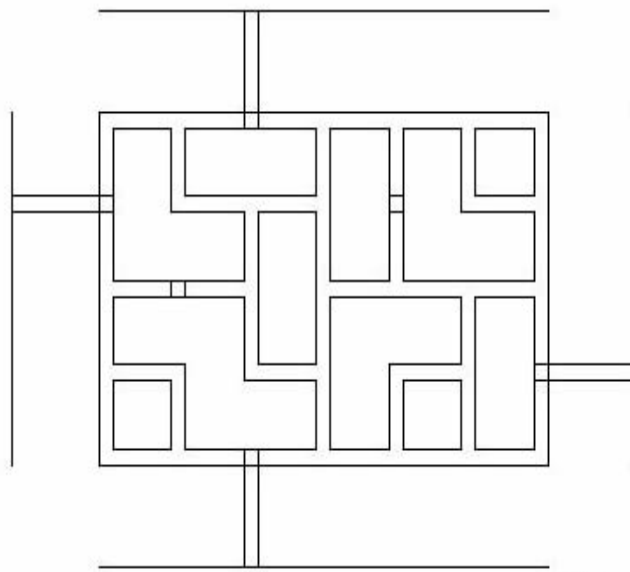
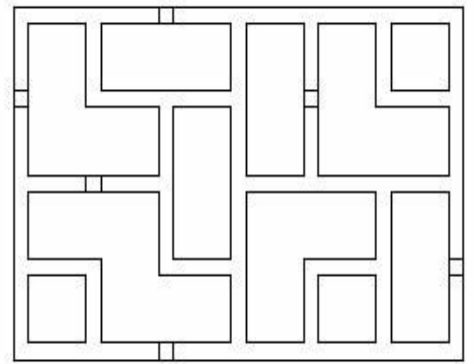
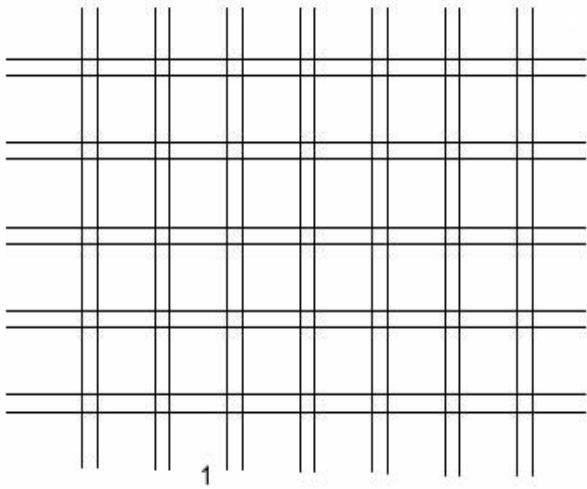
## Assignment 4



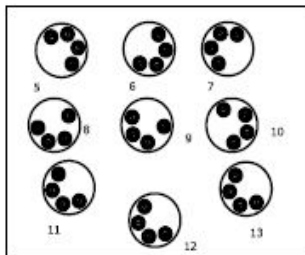
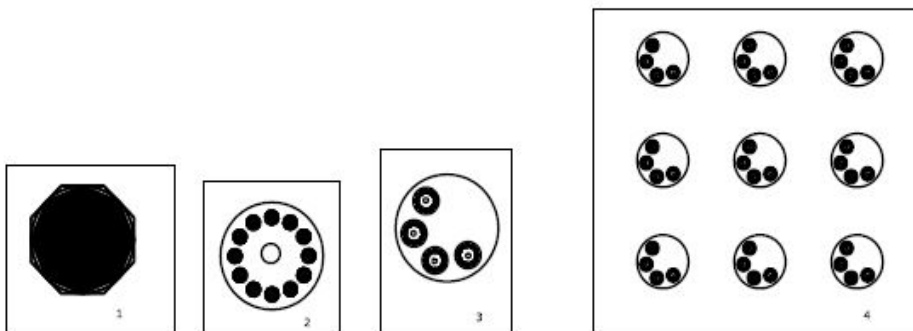
## Assignment 5



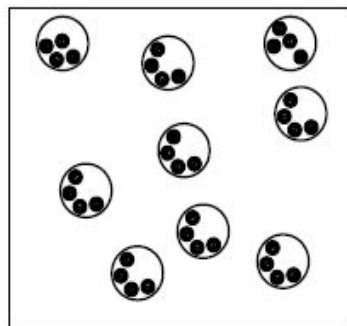
## Assignment 6



## Assignment 7



BOX 1

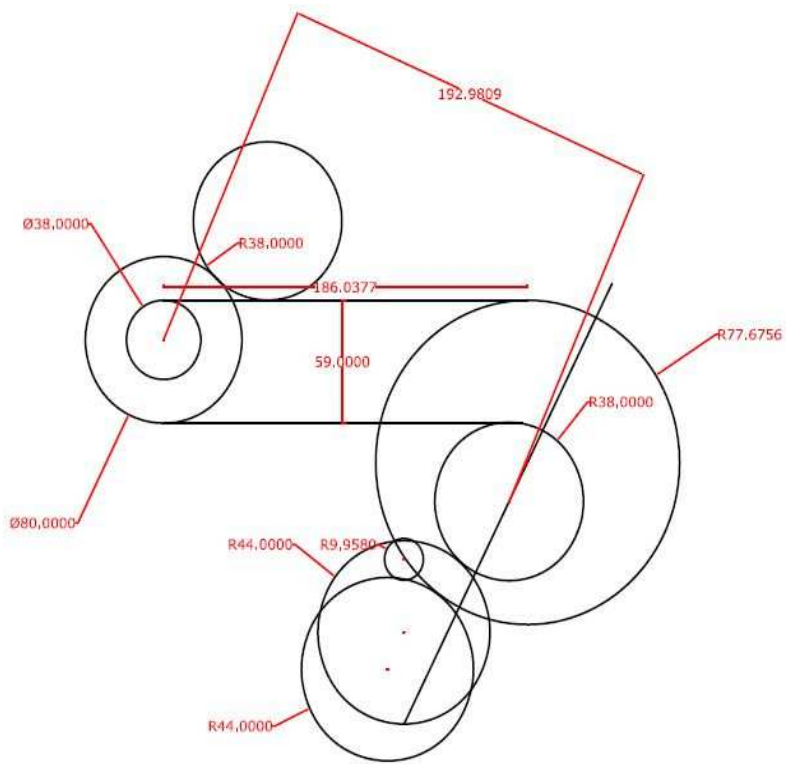


BOX 2 14

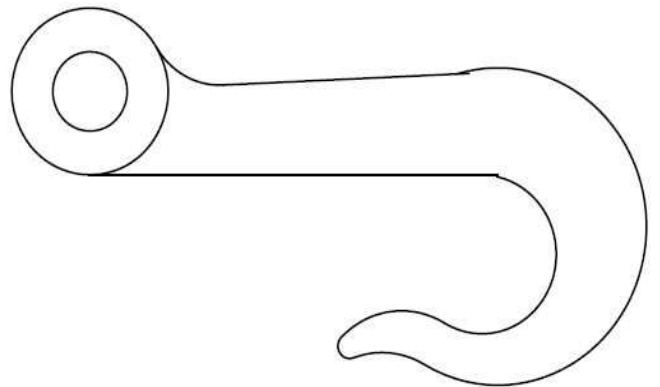
1. Draw the circle,two octagons and hatch the inner octagon
- 2.Copy and scale drawing 1 by 0.125,draw a circle around it and array(polar).then draw the inner circle.
- 3.Copy and scale drawing 2 by 0.25,draw a circle round it and array(polar)through 180.
- 4.Copy and scale drawing 3 by 0.5 and array(rectangular). Copy drawing 4 into two other places(box 1 and 2)
- Box 1
- 5.Rotate the entire circle by 180
- 6.Rotate by 90
- 7.Rotate by 270.
- 8.Rotate one by -90 using center of circle as base point
- 9.Rotate by 90
- 10.Rotate by 180
- 11.Rotate circle by -30 using center of circle 12 as base point
- 12.Rotate circle by 30 " " " " " " " "
- Box 2
13. Move colored circle as shown.



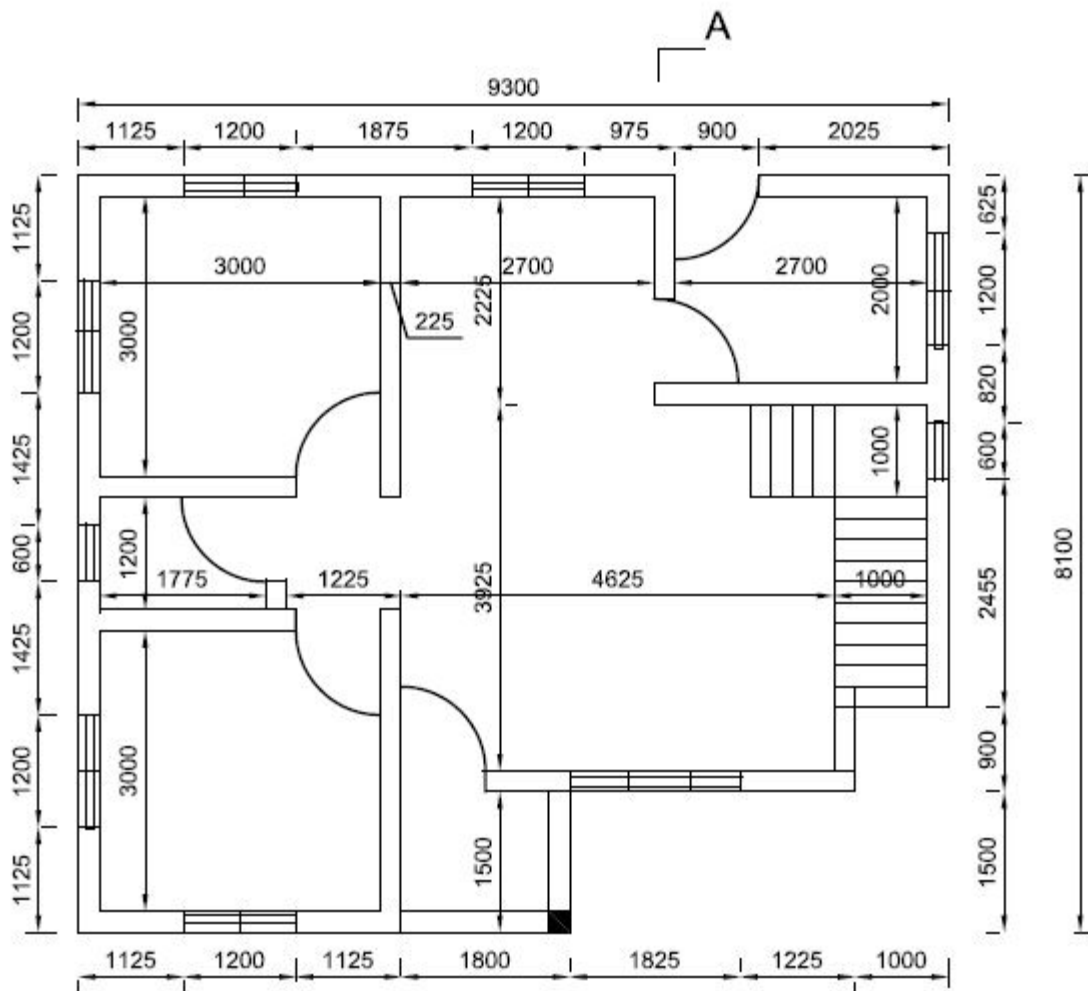
## Assignment 8



## ASSIGNMENT 9

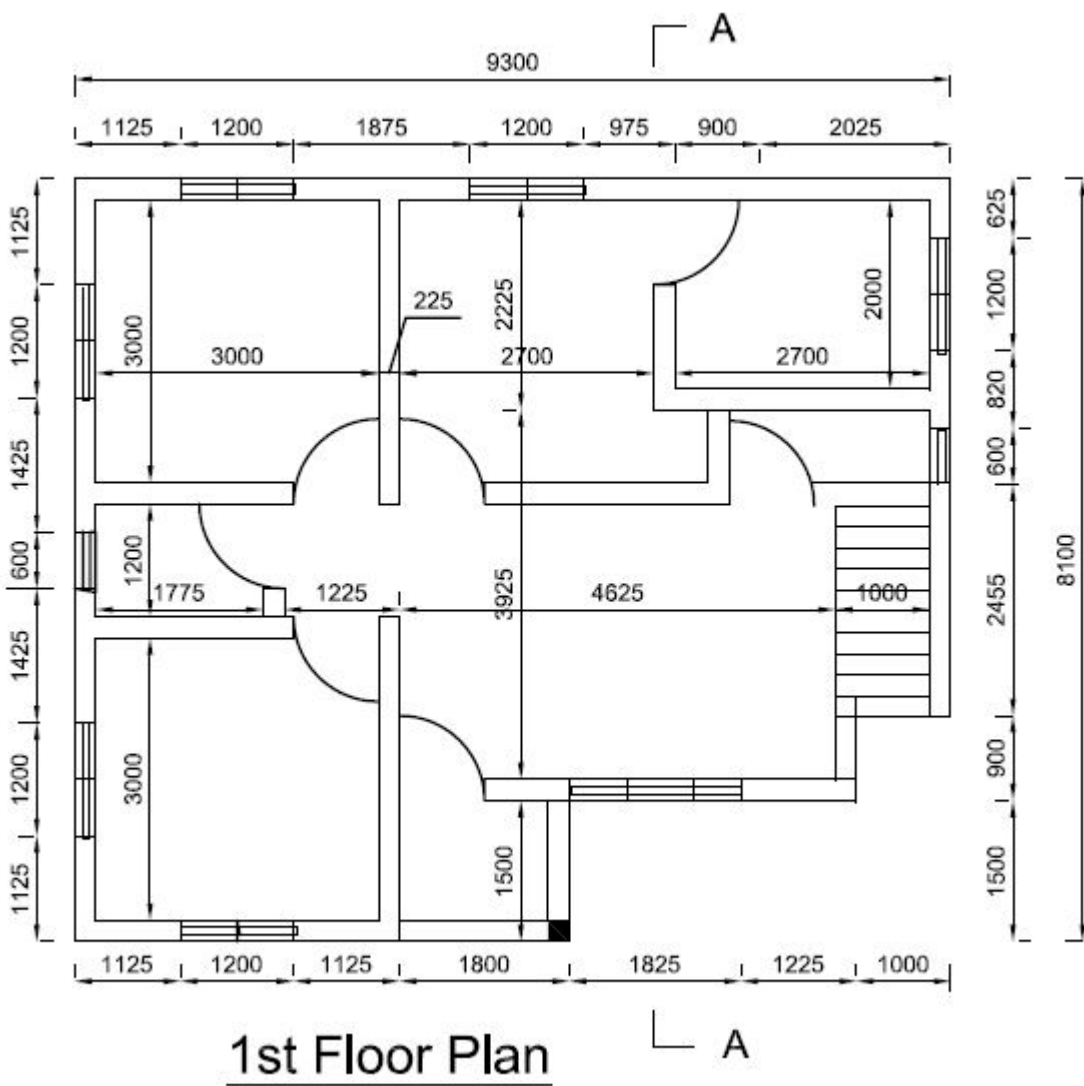


## Assignment 9



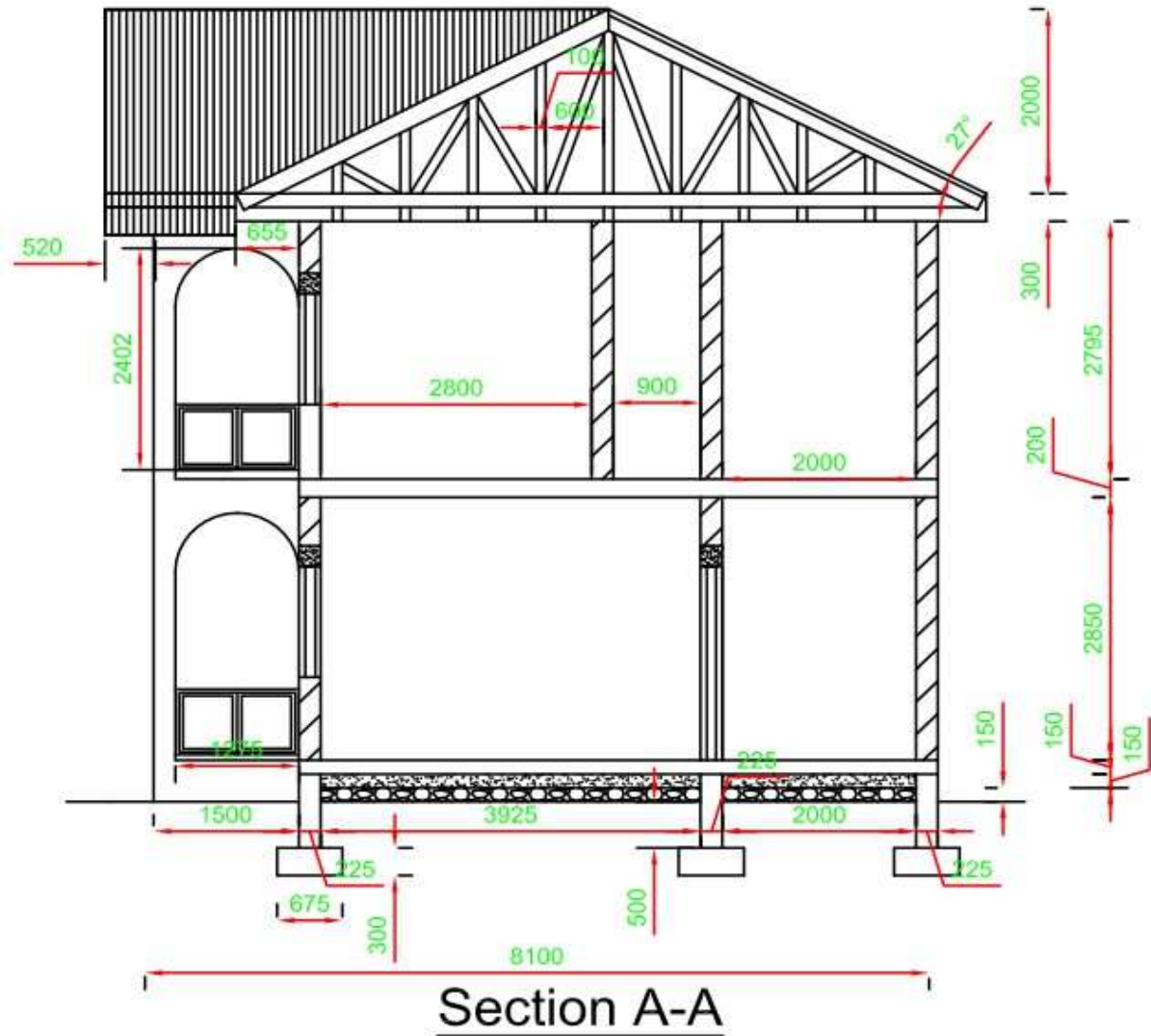
Ground Floor Plan

## Assignment 10

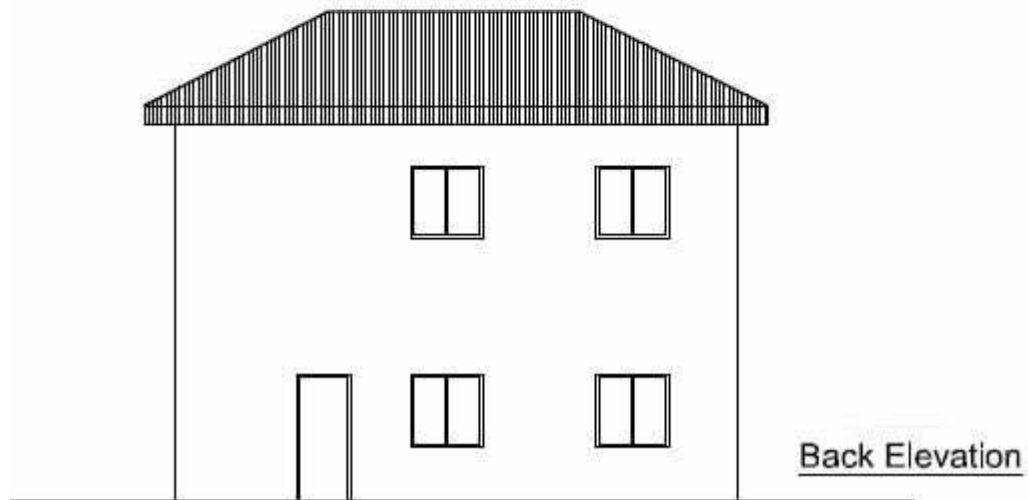


## Assignment 11

- 75 x 100mm Wall plate
- 50 x 150mm Tie beam
- 50 x 150mm Rafter
- 50 x 150mm King post
- 50 x 100mm Struts
- 50 x 75mm Purlins
- 50 x 50mm Noggins
- 5 x 35mm Battens
- 25 x 300mm Wrought fascia board



## Assignment 12



## Assignment 13

